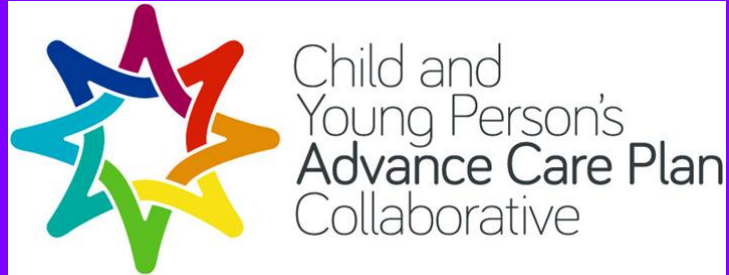
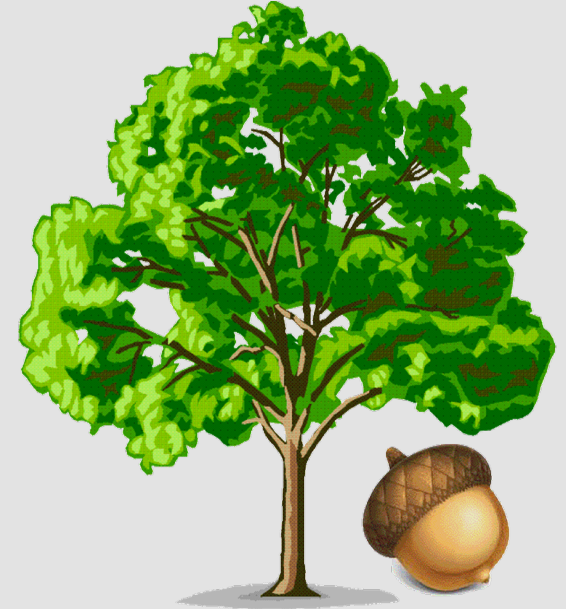


CYPACP



A celebration of collaboration
Welcoming new partners
Moving forward

Dr Serena Cottrell



Thank you

Nazira
Albagothy





South Central

Past

Present

Future

- To celebrate and say some thank yous
- A short history of the journey
- CYPACP where are we now (NICE, ReSPECT)
- Welcoming new collaborators
- Review of any changes needed. Could we make this a national document? Draft today

Beatrice Eleanor
Yvonne Lee

28th March 1997
to
6th March 2010

Christmas Eve 2005 Personal Journey

Lee Family (1st thank you) Helen, Mark, Rosie, Juliette and Bea





History

Timeline to Version 1

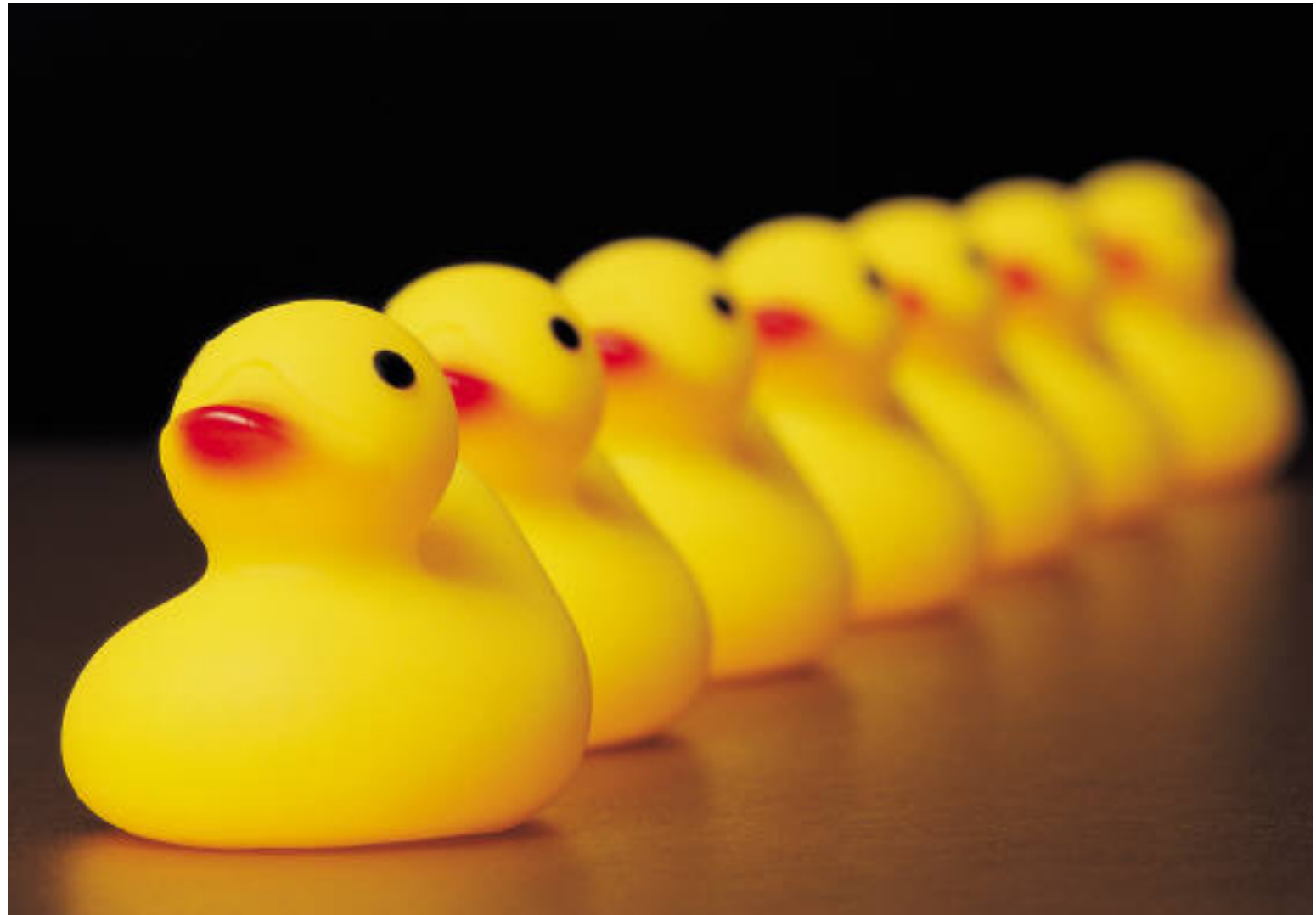
- University Hospital Southampton local paperwork 2006-2009 collaborating with community nursing team
 - **South Central** shared regional paperwork created; August 2008
Key points **holistic** view of the child not just medical information, **crossing boundaries** (hospice, community, hospital, school) **easy to use** at 03.00 on Saturday night “**Like the clinician who knows the child best standing at the bedside with you at 3am in ED**”
- LAUNCHED 18th March 2010 (12 days after Beatrice's death)**
- 2nd thank you Helen and Douglas House; Susie Lapwood, Emily Harrop, Karen Brombley and others (Abigail, Helen)

Working in parallel embedding version 1

South Central 2010
Kent 2010

West Midlands 2011
(3rd thank you)
Angela . Sue, Nikki,
Mark, Fiona
same paperwork

Evelina 2011
similar paperwork





The growth to
version 2 CYPACP
Birth of the
collaboration

- The North West 2014 (4th thank you)
- Peter Marc, Lisa , Linda and the website team
- Birth of the website
- CYPACP as we know it
- New collaborators
- NICE, ReSPECT

<https://www.cypacp.nhs.uk>



About us	Collaborative Agreement	Document Downloads	Education / Training
Parents & Families	Useful Links / Documents	Latest News	Administration



Welcome to the CYPACP Website

If you wish to see a picture of your organisation or of anything else please send a photo to peter-marc.fortune@cypacp.nhs.uk, or info@cypacp.nhs.uk



A huge improvement

?

North West website,
electronic form
further modifications

West Midlands created toolkit
Designed the logo
Modeled implementation
Contributed to improvements

South Central
original idea for document,
wrote ACP and supporting documents
policy, guide and patient leaflets

Building Blocks
Team Work
Collaboration
Listening

2017

2012 - 2014

2011- 2014

2008 - 2010

Working out
the absolute
non
negotiables
middle box
ReSPECT



Collaboration



Child and
Young Person's
Advance Care Plan
Collaborative

Feedback

- Feedback for Version 3 directly to me rather than thru the website
- s.cottrell@soton.ac.uk

TODAY



Where do we go
now?

The Journey



Passing the
baton
Who should
ultimately
own it?

? RCPCH



NICE
accreditation

ReSPECT

New
collaborators

Where now

